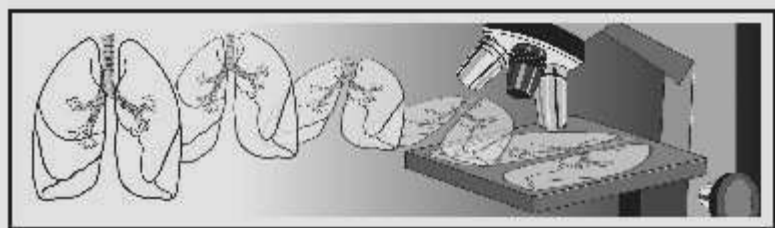


Pulmonary Pathology Society



Henry Tazelaar, M.D., President

Phil Cagle, M.D., Vice President

Donald Guinee, M.D., Treasurer

Elisabeth Brambilla, M.D., Secretary

December 2004 ~ Volume 10

Dear PPS membership,

This is volume 10 of our newsletter and it is packed with a summary of highlights from 2004 and announcements about many meetings in 2005 that should be of interest to you. Also note the bulleted items below.

- *In the past year the PPS has become a Guest Society of the American Society for Investigative Pathology which allows PPS members to register for Experimental Pathology 2005 at lower rates. Many PPS members will be presenting on a variety of topics at this meeting.*
- *Don't forget to send an abstract or case summary for presentation at the PPS meeting to be held in Annecy, France. Go to <http://www.mayoreferenceservices.org/mml/pps-abstract.asp>. Abstracts are due December 15, 2004, so HURRY!*
- *ANNUAL DUES SHOULD BE SENT TO ROSE MCNEELY USING THE FORM AT THE END OF THE NEWSETTER. THANKS!!*



2004 PPS AWARD SUMMARY

Congratulations to trainees interested in Pulmonary Pathology. There has been a marked Increase in Trainee Authorship of USCAP Abstracts in the past three years! Keep up the good work! Remember that there is a \$500.00 cash award for the trainee judged to have the best pulmonary poster at the meeting.

2004: 34 eligible abstracts / 65 total abstracts (52%)

2003: 23 eligible abstracts / 59 total abstracts (39%)

2002: 17 eligible abstracts / 73 total abstracts (23%)

PPS Awards at USCAP 2004

Last year's winning abstract was entitled:

“Molecular Analysis of Mesothelial Cell Hyperplasia Assists Diagnosis”

The first author of this work was **Deepak Mohan, M.D.**

Department of Pathology and Laboratory Medicine, University of Pittsburgh Medical Center

PPS Travel Stipend 2004-5 were awarded to

#1 Diana Ionescu, M.D.

Department of Pathology, University of Pittsburgh
for her work on EGFR Amplification in the Thymic Epithelial Tumors

#2 Harmanjatinder Sekhon, M.D., Ph.D.

Oregon Health Sciences University, Portland, OR, USA

The Pulmonary Pathology Society Lifetime Achievement Award was conferred on:

James C. Hogg, M.D., Ph.D.

University of British Columbia, Vancouver, BC



PULMONARY PATHOLOGY SOCIETY TRAVEL AWARD 2005-2006

We are pleased to announce the continuation of the Pulmonary Pathology Society (PPS) Travel Award program for the academic year 2005-2006. This stipend of \$1,750 is offered to one pathologist-in-training (resident or fellow) for the study of pulmonary pathology with a member of our Society, and is intended to support the costs of travel and/or living expenses for a one-month period of study.

To apply for this award, candidates should send their curriculum vitae and a cover letter describing their interests in pulmonary pathology to me at either the electronic (preferred) or physical address below. The PPS Awards Committee will consider all applicants and select one recipient based upon academic accomplishments, demonstrated interest in pulmonary pathology, and likelihood of future contributions to the field. **Applications will be accepted until February 1, 2005**, and the winner will be announced at the PPS evening session at the upcoming USCAP meeting in San Antonio.

Dani S. Zander, MD

Chair, Awards Committee, Pulmonary Pathology Society

Professor and Vice Chair, Director of Anatomic Pathology

Harvey S. Rosenberg Chair in Pathology and Laboratory Medicine

University of Texas Health Science Center at Houston Medical School

Department of Pathology and Laboratory Medicine

6431 Fannin

Room MSB 2.258

Houston, TX 77030

Electronic address: Dani.S.Zander@uth.tmc.edu



MEETINGS 2005

Pulmonary Pathology Society Companion Meeting To the United States and Canadian Academy of Pathology Meeting 7:00 p.m., February 26, 2005, San Antonio, Texas

Evolving Concepts in Pulmonary Lymphoproliferative Disorders

Moderators: **Jaishree Jagirdar**
University of Texas Health Science Center
San Antonio, TX

7:00 p.m. *Pulmonary Lymphoid Proliferations: A Practical Diagnostic Approach*

Speaker: **Jeffrey L. Myers**
Mayo Clinic
Rochester, MN

7:40 p.m. *New Insights into the Molecular Pathogenesis of Pulmonary MALT Lymphomas*

Speaker: **Ahmet Dogan**
Mayo Clinic
Rochester, MN

8:20 p.m. *Small Lymphocytic Proliferations of the Lung*

Speaker: **Lawrence Weiss**
City of Hope National Medical Center
Duarte, CA



April 2-6, 2005 – Experimental Biology 2005 – San Diego, CA – Environmental Toxicology Session sponsored by ASIP and the Pulmonary Pathology Society (see program below)

June 15-17, 2005 – Fourth Biennial Symposium Pulmonary Pathology Society – Lake Annecy, France (see program below)

September 16-21, 2006 – PPS seminars and companion meetings at the 100th International Congress of the International Academy of Pathology – Montreal, Canada



Experimental Biology 2005 April 2-6, 2005, San Diego, CA

Environmental Toxicology

Chaired: P.T. Cagle and D.S. Zander

Sponsored by ASIP and the Pulmonary Pathology Society

Monday, April 4, 2005 – 8:30 am – 11:30 am

San Diego Convention Center

8:30 am **Modeling cigarette smoke-induced emphysema in laboratory animals**
A.M. Churg, University of British Columbia

9:05 am **Molecular changes in preneoplastic and neoplastic bronchial epithelial carcinogenesis**
E. Brambilla, CHU Grenoble, France

- 9:40 am **Modulation of cell signaling pathways for control of cell proliferation and transformation by asbestos**
B.T. Mossman, University of Vermont Col. of Med.
- 10:15 am **Metabolism and cellular effects of arsenic compounds**
M.W. Lieberman, The Methodist Hosp. Res. Inst.
- 10:50 am **Common structural characteristics of toxic particles: carbon nanotubes, quartz, and tuberculosis**
R.L. Hunter, University of Texas, Houston Med. Sch.



**Fourth Biennial Symposium – Pulmonary Pathology Society
June 15-17, 2005, Lake Annecy, France**

The meeting will be held on Lake Annecy, France, one hour by car from Geneva, Switzerland at the beautiful Hotel Imperial Palace situated on the lakeside. Annecy lies in an exceptional setting in the French Alps, with its magnificent blue-green landscape, rich history and unrivalled heritage.

Around Annecy, a real artistic center, the lakeside can relate a whole history through its castles, churches and abbeys set in the superb backdrop of unspoiled mountains.

Enjoy the proposed excursion program on Thursday, June 16, afternoon such as Tour of the City, Boat Cruise of the Lake, or Tour of Village and Castle, or Mountain Biking

Go to www.pulmonarypath.org

For more information and a complete brochure

~ Meeting outline for PPS meeting in Annecy, France ~

Wednesday, June 15, 2005 - Neoplastic Lung Disease I

Moderators: P. Cagle, V. Roggli, E. Duhig, R. Sobonya, H. Minato, P. Ohori

Overview of Molecular Pathogenesis of Lung Cancer

Elisabeth Brambilla

Telomerase Activity in Lung Preneoplasia and Neoplasia

Sylvie Lantuejoul

Retinoic Acid Receptors Expression and Regulation in Lung Preneoplasia

Jean-Michel Vignaud

Mucinous (Colloid) Type Adenocarcinoma Phenotype Mimicking Colon Carcinoma (MUC2, CDX2)

Giulio Rossi

Emerging Pulmonary Infections

Sherif Zaki

Familial Idiopathic Pulmonary Fibrosis

Kevin Leslie

Airway Centered Fibrosis-Bronchiolitis-Interstitial Pneumonia

Sam Yousem

Interstitial Lung Disease with Pulmonary Vascular Pathology

Frédérique Capron

Thursday, June 16, 2005 – Neoplastic and Non-Neoplastic Disease II

Moderators: A. Khor, WD Travis, D. Dail, MC Aubry

Biomarkers in Lung Cancer

Wilbur Franklin

Alterations of Adherence Molecules in the Spectrum of Atypical Alveolar Hyperplasia to Adenocarcinoma

Keith Kerr

Forensic issues in Pulmonary Pathology

Michael Graham

Clinicopathologic Features of Pulmonary Involvement in Inflammatory Bowel Disease

Philippe Camus and Thomas Colby

Friday, June 17, 2005 – Non-Neoplastic Disease II

Moderators: P. Hasleton, M. Koss, F. Galateau-Salle, SH Cho, H. Tazelaar, T. Kawai

Pitfalls & Pearls in Pulmonary Lymphoproliferative Disorders

Andrew Nicholson

Infections in Transplantation Pathology

Susan Stewart

Handling and Diagnosing Problematic Pneumoconioses

Richard Attanoos

Of Man, Music, and Mycobacteria

Anthony Gal

Pitfalls in the Diagnosis of Thymomas

Saul Suster

Mystery Case Contest

Dani Zander and Aliya Husain

Abstract submission is highly solicited,
since poster demonstration will be available during the PPS Seminar.

To submit an abstract for review, please access the following URL:

<http://www.mayoreferenceservices.org/mml/pps-abstract.asp>

If you do not have access to the Internet, please contact Mayo Medical Laboratories Education Office at
507-266-3074 or 800-533-1710

The deadline for submission of abstracts is December 15, 2004

☞ Here some Upcoming Meetings in Europe:

International Association for the Study of Lung Cancer

11th World Conference on Lung Cancer

July 3-6, 2005 - Barcelona, Spain



Conference Website: www.2005worldlungcancer.org

Some topics, symposia and educational sessions will be especially interesting for lung pathologists. As example:

Monday 4 July, 2005

MTP1 - Lung cancer genetics

Lung cancer genetics: John Minna, MD

Lung cancer genetics: Takashi Takahashi, MD

Hot topics 1 – Genomics and proteomics

Chairs: Tetsuya Mitsudomi, MD, and Montserrat Sanchez-Cespedes, PhD

Expression profiling of lung cancer and its clinical implications: David G Beer, PhD

Proteomics of lung cancer: David Carbone, MD, PhD

EGF mutations and gefitinib in Japanese lung cancer patients: Tetsuya Mitsudomi, MD

Hot topics 5 – The IASLC staging project

Chairs: Peter Goldstraw, MB, and John J Crowley, PhD

The IASLC staging project: An overview. Peter Goldstraw, MB

The IASLC staging project: A surgeon's perspective. Yoh Watanabe, MD

The IASLC staging project: A radiotherapist's perspective. David L Ball, MB

Special Education Session 2 – Key issues in mesothelioma

Chairs: Harvey I Pass, MD, and Bruce Robinson, MD

Carcinogenesis issues: New insights on "The asbestos/SV40 phenomenon": Michele Carbone, MD

Surgical issues: Which operation, when and with what? David Sugarbaker, MD

New medical oncologic insights into mesothelioma: Nicholas Vogelzang, MD

Genomic prognostication and classification studies of mesothelioma: Harvey I Pass, MD

Serum mesothelin related peptides in mesothelioma: Bruce Robinson, MD

Tuesday 5 July, 2005

MTP 8 – Molecular predictors of outcome for lung

Molecular predictors of outcome for lung cancer: Paul H Gumerlock, PhD

Molecular predictors of outcome for lung cancer: Robert Kratzke, MD

Wednesday 6 July, 2005

MTP 11 – Impact of molecular tools in lung cancer pathology

Preinvasive squamous lesions: Pathology and genetics. Wilbur A Franklin, MD

Impact of molecular studies on lung tumor classification: Iver Petersen, MD

MTP 12 – Molecular staging of lung cancer

Molecular staging of lung cancer: David H Harpole, Jr, MD

Preclinical and clinical studies of molecular target-based drugs in Japan: Nagahiro Saijo, MD

MTP 14 – Biomarkers for early detection of lung cancer

Development of biomarkers for early detection: Adi Gazdar, MD

Genetic alterations in preinvasive lung cancer : Stephen Lam, MD

MTP 15 – Update on EGF inhibition and resistance mechanisms in NSCLC

Fluorescence in situ hybridization analysis and response to EGF inhibitors: Fred R Hirsch, MD, PhD
EGFR Mutations, risk factors and outcome in NSCLC: Pasi A Janne, MD

Hot Topics Session 11 – International neuroendocrine lung tumor registry

Chairs: Elisabeth Brambilla, MD and William D Travis, MD

Overview of registry and presentation of 2004 WHO classification of neuroendocrine tumors: William D Travis, MD

Clinical aspects of neuroendocrine tumors: Bruce E Johnson, MD

The molecular biology of neuroendocrine tumors: Elisabeth Brambilla, MD

Report on the Spanish neuroendocrine lung tumor registry: Mariano Garcia-Yuste, MD

The full program is accessible on the website



European Society of Pathology

20th European Congress of Pathology

Carrefour de Pathologie 2005

September 3-8, 2005 - Paris, France



Conference Website : www.pathology-congress.com/en/ecp.asp

Pulmonary Pathology

Tumors of the Mediastinum (Short Course)

Moderators: S. Suster, C. Moran

Mesotheliomas and other Tumors of the Pleura (Slide Seminar)

Moderators: A. Gibbs, F. Galateau-Salle

Key diagnostics in Interstitial Lung Diseases (Short Course)

Moderators: W. Timens, I. Kern

Role of Bronchoalveolar Lavage in Pulmonary Pathology (Short Course)

Moderators: F. Thivolet, H. Popper

New trends in Pulmonary Diseases (Business Meeting)

Moderators: B. Murer, H. Zeren



European Respiratory Society

European Respiratory Society Annual Congress

September 17-21, 2005 – Copenhagen, Denmark



Conference Website: www.ersnet.org

Several lung pathology and biology sessions will stand during the ERS Congress in Copenhagen:

Pulmonary Pathologists are invited to participate in:

Assembly 3: Cell and Molecular Biology

Chairs: Monica Spiteri, Elisabeth Brambilla (Secretary)

The program of Copenhagen ERS Congress 2005 includes a Major Symposium:

“Update on the role of angiogenesis in the pathogenesis and treatment of lung disease”

organized by E. Brambilla and J. Chorotowska

Copenhagen ERS Program will be finalized soon and the lung pathology sessions will appear in the next Newsletter (see website).

For propositions of symposia for the next ERS 2006 Meeting:

please address your proposition to Elisabeth Brambilla

Email: EBrambilla@chu-grenoble.fr



PULMONARY PATHOLOGY SOCIETY CONTACT INFORMATION

For future newsletters, please send news items of upcoming meetings, course information, etc. to:

Elisabeth Brambilla, MD

E-Mail: EBrambilla@chu-grenoble.fr

Fax: 33+ 4 76 76 59 49

PPS contact person at FAES:

Rose McNeely

One Cloister Court, Suite 230

Bethesda, MD 20814-1460

Tel: (301) 496-7975

Fax: (301) 402-0174

E-Mail: rmcneely@mail.nih.gov



PULMONARY PATHOLOGY SOCIETE OFFICERS (2004-2006)

President: Henry D. Tazelaar, M.D.

Vice-President: Philip Cagle, M.D.

Treasurer: Donald G. Guinee, M.D.

Secretary: Elisabeth Brambilla, M.D.

Program Committee

Chair: [Kelly Butnor, M.D.](#) (2004-2006)

Andrew Churg, M.D. (2004-2006)

Sanja Dacic, M.D., Ph.D. (2004-2006)

Leslie A. Litzky, M.D. (2004-2006)

Samuel A. Yousem, M.D. (2004-2006)

Awards Committee

Chair: [Dani S. Zander, M.D.](#) (2004-2006)

Abida K. Haque, M.D. (2004-2006)

Aliyah Husain, M.D. (2004-2006)

Keith M. Kerr, M.D. (2004-2006)

Andras Khor, M.D. (2004-2006)

Board of Trustees:

Carol Farver, M.D. (2003-2005)

Françoise Galateau-Salle, M.D. (2004-2006)

Toshiaki Kawai, M.D. (2004-2006)

Joseph Tomashefski, M.D. (2003-2005)

Web Site Coordinator

Don Guinee, M.D.

PULMONARY PATHOLOGY SOCIETY MEMBERSHIP APPLICATION

For the year January 2005 thru December 2005

Please print or type all information neatly. Mail or fax your membership application to:

Pulmonary Pathology Society
C/O Foundation for Advanced Education in the Sciences, Inc. (FAES)
Attention: Carline Coote
One Cloister Court, Suite 230
Bethesda, MD 20814-1460

Phone: (301) 496-7975 ~ Fax: (301) 402-0174 ~ rmcneely@mail.nih.gov

Type of Application *(please check one)*

- New Application
 Membership Renewal

Membership Dues *(please check one)*

- Regular membership dues (\$50)
 Resident membership dues - US (\$20)
-

Payment Information

- Check enclosed (payable to FAES) Credit Card (Visa or MasterCard only)

Credit Card Number

Expiration Date

Signature

In order for our records to be as accurate as possible, and to ensure that we can communicate with you readily, please provide as much information below as possible and return this sheet with your dues.

Full Name & Degree

Title

Institution

Department

Work Address

City, State Zip COUNTRY

Other Address (optional)

Work Phone

Home Phone

FAX

Email

Specialty or area(s) of interest in pulmonary pathology

- | | | | |
|--|---|------------------------------------|---|
| <input type="checkbox"/> Acute injury | <input type="checkbox"/> Airway/COPD | <input type="checkbox"/> Cytology | <input type="checkbox"/> Environmental/
Occupational Disease |
| <input type="checkbox"/> Infection | <input type="checkbox"/> Interstitial/ Diffuse
Disease | <input type="checkbox"/> Neoplasia | <input type="checkbox"/> Pediatric Disease |
| <input type="checkbox"/> Pleural Disease | <input type="checkbox"/> Transplantation | <input type="checkbox"/> Vascular | <input type="checkbox"/> Vasculitis |